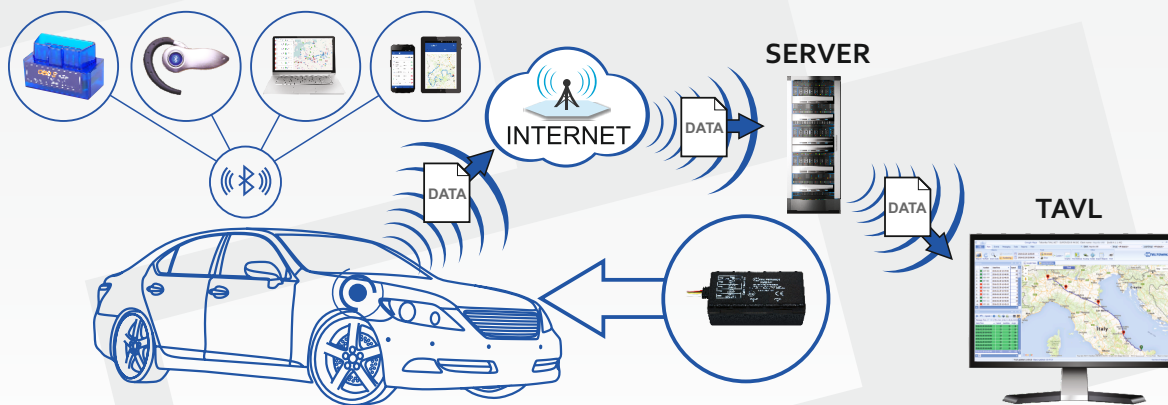




# FMB964

Compact and smart Teltonika tracker now equipped with innovative GNSS/GSM/Bluetooth® module packed with set of new features and functions. FMB964 has internal high gain GSM, GNSS antennas and internal high capacity Li-ion battery.



### New generation GSM/GNSS module

With new integrated GSM/GNSS module, your tracking experience will be better than ever before. Even higher sensitivity, faster than ever cold start and almost instant hot start ensures that your fleet will be tracked precisely.

### Bluetooth®

Integrated Bluetooth® enables wireless headset and various other Bluetooth® devices connectivity. Make phone calls to your employee via Bluetooth® headset. No unauthorized calls anymore! Be sure that your employee is always safe and uses hands free headset instead of phone!



### Integrated battery

High capacity internal Li-ion battery ensures long autonomous working hours, receive tracking data and warnings when main power source is disconnected.

### Smart Crash detection

Ensure safety of your employee with smart Crash detection. Get alarm message immediately after accident, save workers life!



### IP54 case

FMB964 features new case design which ensures increased protection against dust ingress and water splash from any direction. It is certified according IP54 protection class. FMB964 with IP54 case can be installed in machines with increased possibility of dust and water ingress.

### Micro SD card

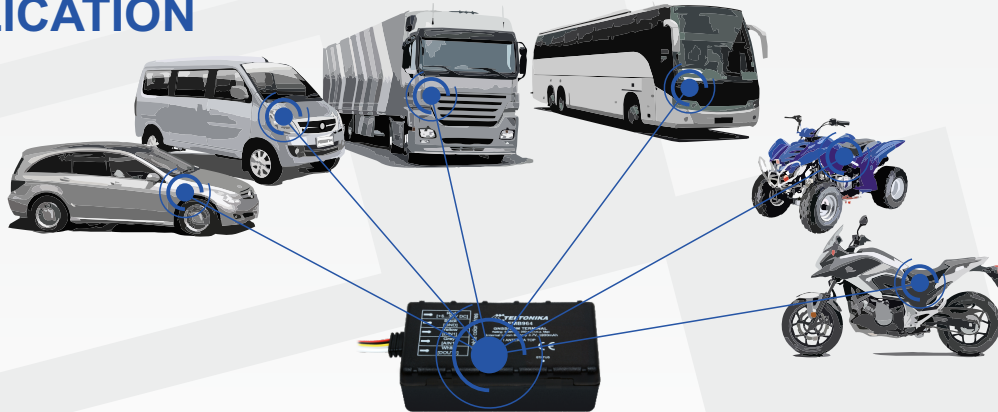
Don't lose any records with micro SD card up to 32 GB!  
FMB964 will store all data in micro SD card when driving in areas where GSM is not available.



## DESCRIPTION

FMB964 is light real-time tracking terminal with internal high gain GNSS, GSM antennas and Bluetooth® connectivity which is able to collect device coordinates and other useful data and transfer them via GSM network to server. Bluetooth® peripherals can greatly expand device functionality wirelessly. This device is perfectly suitable for applications where location acquirement of remote objects is needed: security, fleet management, motorcycle, car rental companies, taxi companies, public transport, logistics companies, personal cars and so on.

## APPLICATION



## FEATURES

- With new integrated GNSS module, your tracking experience will be better than ever before. Even higher sensitivity, faster than ever cold start and almost instant hot start ensures that your fleet will be tracked precisely
- Bluetooth® transceiver fully compliant with Bluetooth® specification V3.0 for external peripherals
- Up to 32 GB micro SD memory card for up to 275 million records
- IP54 case
- Color Ribbon undetachable cable
- Small and easy to mount case
- High gain internal GSM antenna and internal GNSS antenna allow mount FMB964 much easier
- Real Time tracking
- Smart data acquisition based on time, distance, angle, speed delta, ignition and I/O events allow to have precise online tracker
- Sending acquired data via GPRS (TCP/IP and UDP/IP protocols)
- Smart algorithm of GPRS connections for GPRS traffic saving
- Operating in roaming networks by preferred GSM providers list
- Add all your unwanted GSM operators to black list
- Events from I/O elements detection and sending via GPRS or SMS
- 50 geofence zones (rectangular or circle)
- Auto Geofencing created for car towing detection and car theft prevention
- Deep Sleep mode (less than 6 mA power consumption)
- Online Deep Sleep mode for constant connection with server
- Firmware and configuration update via GPRS (FOTA)
- 3 operational modes (Home, Roaming, Unknown) based on operator
- Time synchronization by NTP (Network Time Protocol) if GNSS signal is absent
- Time synchronization by NITZ (Network Identity and Time Zone) if GNSS signal is absent
- Integrated scenarios:
  - Over speeding to secure driver and prevent penalties
  - GSM jamming detection
  - Excessive Idling detection
  - DOUT control via call
  - Trip start and end detection
- Bluetooth® scenarios:
  - Voice calls over Bluetooth®
  - OBDII Bluetooth® dongle
  - Data link mode over Bluetooth®

## SPECIFICATIONS

### GSM

- Quad-band 900/1800 MHz; 850/1900 MHz
- GPRS Multi-Slot Class 12 (up to 240 kbps)
- GPRS Mobile Station Class B
- SMS (text/data)

### GNSS

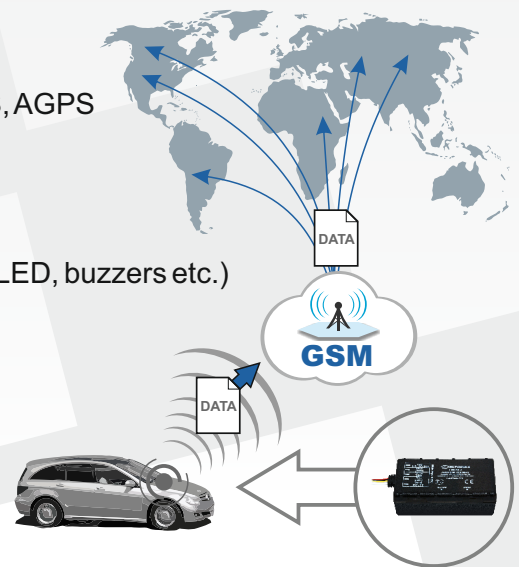
- Tracking: 33/ 99 acquisition channels
- -165 dBm sensitivity
- Hot start < 1s
- Warm Start < 25s
- Cold start < 35s
- NMEA-183 protocol
- GPS, GLONASS, GALILEO, BEIDOU, SBAS, QZSS, DGPS, AGPS
- Accuracy < 3m

### INTERFACE

- 1 Digital Input
- 1 Analog Input
- 1 Digital Open-collector Output (connecting external relays, LED, buzzers etc.)
- Bluetooth® specification V3.0
- Built in accelerometer
- Power supply (+6...+30) V DC with overvoltage protection
- IP54 case
- Internal high gain GSM antenna
- Internal high gain GNSS antenna
- Integrated 1800 mAh Li-ion back-up battery
- Dimensions: L(79mm)xW(43mm)xH(27,5mm)
- 2 Status LEDs
- Micro USB Port

### Bluetooth

- Bluetooth® specification V3.0
- Bluetooth® transceiver fully compliant with Bluetooth® specification V3.0 for external peripherals:
  - Voice calls over Bluetooth®
  - Configuration via Bluetooth®
  - OBDII Bluetooth® dongle



## ACCESSORIES



▶ Bluetooth® headset



▶ USB to micro USB cable



▶ Analog fuel sensors



▶ Door sensors



▶ Relay 12V/24V



▶ Alarm button



▶ LED



▶ Buzzer



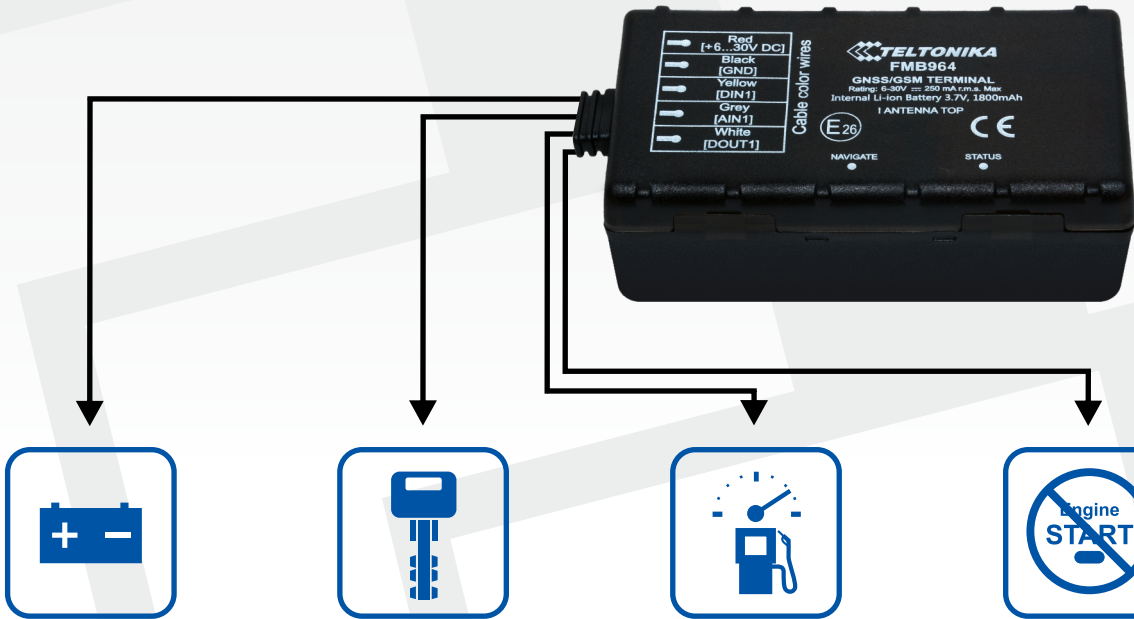
**MicroSD support**  
 - AVL records storage  
 - Offline tracking



**Bluetooth**  
 - Voice calls  
 - Configurator  
 - Bluetooth sensors



**Internal battery**  
 - Backup power supply  
 - Main power loss event



**Power supply**  
 - 6-30 V DC

**1 x Digital input**  
 - Ignition monitoring  
 - Door sensor  
 - Seatbelt sensor

**1 x Analog input**  
 - Analog fuel sensor  
 - Analog temperature sensor

**1 x Digital output**  
 - Engine control  
 - Starter control  
 - Remote switch

