

NOTICE

- ① A Standard SIM Card needed , support GSM / WCDMA ;

GSM / WCDMA



Standard SIM



CDMA2000



Micro SIM



Nano SIM



- ② Data & Call ID of Sim Card must be opened ;
Traffic, SMS, Calls and other SIM card service fee charged by operators;
- ③ Positioning / Remote command function rely on network of base station.
Device may not work well if network signal is not very good;
- ④ Product should stay away from fire, high temperature, heat and other extreme environments;
- ⑤ Product should not be long time soaked or rinsed in water;

INTRODUCTION



FUNCTION

Short Press to Open/Close LED
Press >3s to send SOS Alarm



POWER

Press >3s to power on
Press >3s to power off



GPS (GPS Satellite signal, Blue)
Quick flash: Searching for GPS
Satellite signals (Not positioned);
Slow flash: Found GPS signals ;
(Positioned by GPS)
Blue LED Long light after charging.



GSM/WCDMA LED (LBS / Base signal, Red)
Quick flash: Searching for base signals
(Not connect yet) ;
Slow flash: Found base signals ;
(Base Connected and LBS start)
Red LED Long light when charging.

Function/Parameter

- GSM / WCDMA dual-mode 7-frequency, universal in the world
- GPS/LBS (Satellite/ Base) Double Positioning with A-GPS
- 1800mAh lithium battery, low battery alarm
- High-light LED used as a flashlight
- Real-time tracking on Platform & APP, playback track in 90 days
- One Key SOS, GEO-Fence, Speed Alarm
- IP65 waterproof

GPS Positioning Accuracy	5-15m (Depend GPS Signal)
LBS Positioning Accuracy	About 200m (Depend Bases Density)
GPS Frequency	1575 MHz
GSM Frequency	850/900/1800/1900 MHz
WCDMA Frequency	W850/W1900/W2100 MHz
Hot/Warm/Cold Start Time	<3s , <15s , <60s
Battery Capacity	1800 mAh
Dimensions (mm)	79.3(L)X51.9(W)X17.6(H)
Temperature / Humidity	-20°C~65°C / 20%~80%RH
Weight	70 g

Q & A

Q : Positioned by GPS / LBS ?

A : GPS called "Global Positioning System" ,GPS device can be positioned by GPS satellite outdoor , it' s precise positioning. Device also can be positioned by base stations of operator which call LBS ,mainly for assistance positioning.

Q : Location is not accurate?

A : If need accurate positioning, use device outdoor where GPS signal is good and start GPS tracking mode.

Device indoor mainly positioned by LBS, the accuracy lower than GPS

Q : Standby time can be longer?

A : Device need Internet connection. Standby time will be different by different using environment and working mode.

Q : Device offline?

A : The conditions below results in offline.

- ① No balance or No SIM
- ② No GSM or GSM signal is weak
- ③ Battery runs out

Attention for more services:



Wechat Official Account



Keelin Mall



QQ Group of Keelin Users

e²Link WCDMA GPS TRACKER

EELINK Communication Technology CO.LTD

Address: 3 Floor, Yuyang Mansion, Gaoxin North 4th Rd, Keji North 2th Street,
High Tech Park, Nanshan District, Shenzhen, Guangdong, CHINA

TEL : 0755-86278376 / 86278370

Mail : Sales@eelink.com.cn

1

Insert SIM, Power on, Check LED

- Open USB plug and insert SIM to device, notice direction. To remove SIM card , Push SIM Card and it will pop out.
- Insert SIM when device is power off.



SIM Card Direction

- Power on outdoor for positioning, if Red & Blue LED are slowly flashing, device works well.
- Make sure UBS plug is completely plugged, otherwise it will affect waterproof performance.

▶▶ [Begin experience of Keelin product](#)

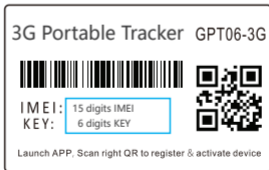
2

Install KEELIN APP, Activate Device

- Scan QR below to download Keelin APP



- Launch APP , Scan QR on Label to register & activate device



▶▶ Begin experience of Keelin APP

Keelin[®] 3G Portable Tracker



GPT06-3G Quick Start Guide

