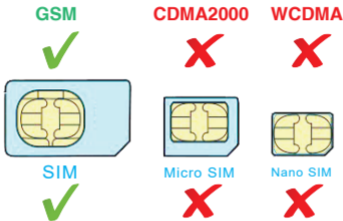


NOTICE

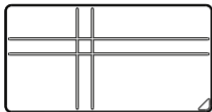
- ① A Standard GSM SIM Card needed , do not support CDMA2000 ;



- ② **GPRS** of Sim Card must be opened ;
Traffic, SMS, Calls and other SIM card service fee charged by operators;
- ③ Positioning / Remote Power off / Remote command function rely on the network of base station. Device may not work well if the network signal is not very good;
- ④ Product should stay away from fire, high temperature, heat and other extreme environments;

INTRODUCTION

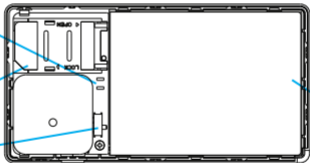
GPT12 General View



LED Indicator

SIM Slot

Power On/Off



Battery



GPS (GPS Satellite signal, Blue)
Quick flash: Searching for GPS
Satellite signals (Not positioned);
Slow flash: Found GPS signals ;
(Positioned by GPS)
Blue LED Long light after charging.



GSM LED (LBS / Base signal, Red)
Quick flash: Searching for base signals
(Not connect yet) ;
Slow flash: Found base signals ;
(Base Connected and LBS start)
Red LED Long light when charging.

Function/Parameter

- Supports quad bands, i.e. 850/900/1800/1900MHz
- GPS/LBS double-Positioning mode, support A-GPS
- 5000mAh Battery , standby for 3 years.
- Long Standby mode, wake up for 5 mins a day, then sleep.
- Turn to Emergency mode for real time tracking after wake up.
- GEO-Fence Alarm, Low battery Alarm.
- Track and config device by PC & APP online.
- OTA upgrade firmware.

GPS Positioning Accuracy	5-15m (Depend GPS signal)
LBS Positioning Accuracy	About 200m (Depend Bases Density)
GPS Frequency	1575 MHz
GSM Frequency	850/900/1800/1900 MHz
Hot/Warm/Cold Start Time	<3s , <15s , <60s
Battery Capacity	5000 mAh
Dimensions (mm)	96(L)×50(W)×11.2(H)
Temperature	-20°C~65°C
Humidity	20%~80%RH
Weight	65 g

Q & A

Q : Positioned by GPS / LBS ?

A : GPS called "Global Positioning System" ,GPS device can be positioned by GPS satellite outdoor. Device also can be positioned by base stations of operator which call LBS ,mainly for assistance positioning.

Q : Location is not accurate?

A : If need accurate positioning, use device outdoor where GPS signal is good and start GPS tracking mode.
Device indoor mainly positioned by LBS, the accuracy lower than GPS

Q : Standby time can be longer?

A : Device need Internet connection. Standby time will be different by different using environment and working mode.

Q : Device offline?

A : The conditions below results in offline.

- ① No balance or No SIM
- ② No GSM or GSM signal is weak
- ③ Battery runs out

e²Link Long Standby GPS Tracker

EELINK Communication Technology CO.LTD

Address: 3 Floor, Yu yang mansion, 2nd Road of Langshan,
Science and Technology Park, Nanshan District, ShenZhen, CHINA

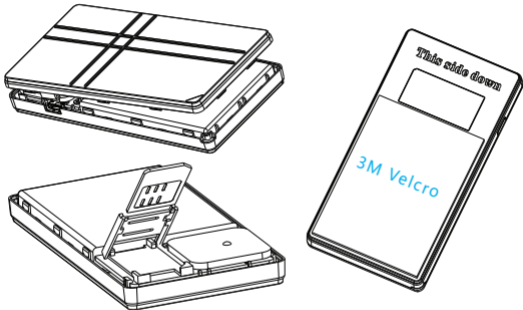
TEL : 0755-86278376 / 86278370

Mail : Sales@eelink.com.cn

1

Insert SIM, Power on, Installation

- Open cover and insert SIM to device, notice direction.
Lift SIM Slot to remove SIM card.



- Turn switch to power on, observe GSM / GPS LED until it works fine (See LED explanation) , Close cover.
- Stick on board with 3M Velcro.

▶▶ Begin Experience of GPS tracker

2

Install KEELIN APP, Activate Device

- Scan QR below to download Keelin APP



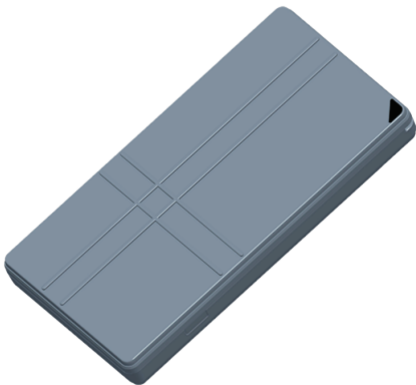
- Launch APP , Scan QR on Label to register & activate device



▶▶ Begin Experience of Keelin APP

Keelin[®]

Standby for 3 Years



GPT12 Quick Start Guide

